

## Informational Pamphlet

Kaiser Aircraft leases approximately 120 acres adjacent to the Birmingham-Shuttlesworth International Airport, where it operates an FAA-certified Part 145 repair station that provides aircraft and engine storage and maintenance activities and has a decades-long history of first-class service across MRO maintenance, disassembly, and parts solutions.

Kaiser Aircraft is open to partnership opportunities including providing aircraft MRO and disassembly services, renting space, and more.

The logo for Kaiser Aircraft Industries, Inc. features the word "Kaiser" in a large, bold, dark blue sans-serif font. A red swoosh, resembling a stylized wing or a curved line, starts under the "K" and arches over the "a" and "i". Below "Kaiser" is the text "Aircraft Industries, Inc." in a smaller, dark blue sans-serif font.

**Kaiser**  
Aircraft Industries, Inc.

# Who we are...

- Kaiser Aircraft operates an FAA-certified Part 145 repair station that provides aircraft storage and maintenance activities and has a decades-long history of first-class service across MRO maintenance, disassembly, and parts solutions.
- By mid-2020 the operations of Kaiser Aircraft encompassed approximately 120 aircraft, 300 aircraft engines, and 80-100 jobs onsite.
- Kaiser is the disassembly center of choice for one major airline and maintains the short and long-term engine storage programs for another.

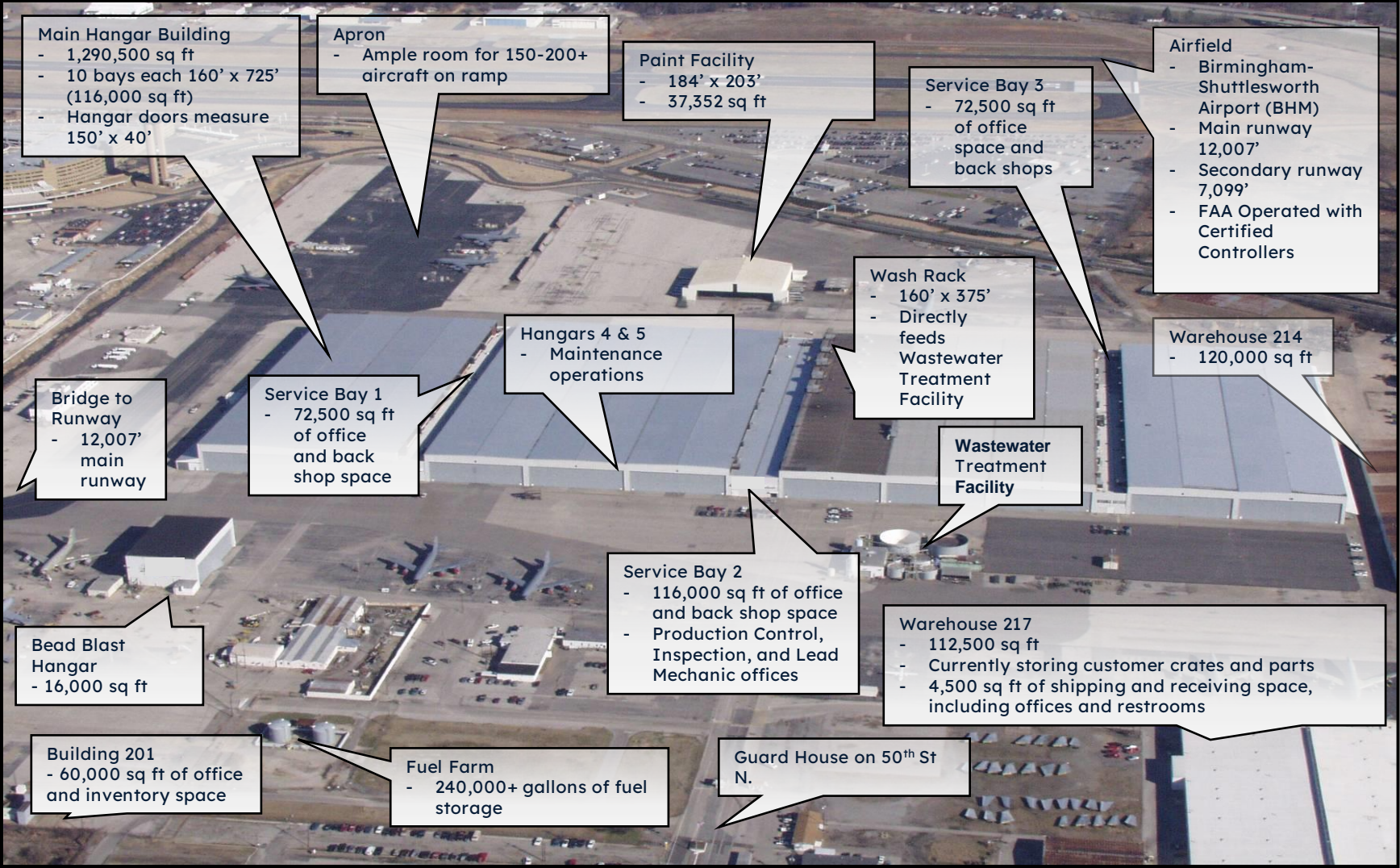


# Facility Aerial View (Mid-2020)



1943 50<sup>th</sup> Street North, Birmingham, AL 35212 | Property Boundaries are Approximate

# Facilities Layout




# Why Birmingham?

Birmingham is served by an extensive transportation system including railway, highway, and air services.

- Eight commercial passenger airlines operate out of the Birmingham/Shuttlesworth International Airport.
- The airport provides a main runway of over 12,000 ft and a secondary runway of 7,100 ft.
- The air cargo facility recently increased capacity by 400,000 sq/ft and is serviced daily by UPS and FEDEX.
- Birmingham bypasses the congestion and delays of Atlanta's Hartsfield-Jackson International Airport yet is placed along major air corridors in the Southeast.
- Four interstate highways provide ease of trucking access. Our facility is within a short drive to New Orleans, Memphis, Nashville, Huntsville, Atlanta and Mobile.
- Our rail system provides a major rail hub for five Class I railroads.



# Kaiser Aircraft's FAA Certifications

<p style="text-align: center;">UNITED STATES OF AMERICA DEPARTMENT OF TRANSPORTATION FEDERAL AVIATION ADMINISTRATION</p> <p style="text-align: center;"><b>Air Agency Certificate</b></p> <p style="text-align: center;"><i>Number</i> IG4R343D</p> <p style="text-align: center;"><i>This certificate is issued to</i> KAISER AIRCRAFT, INC. <i>whose business address is</i> 1943 50th STREET NORTH BIRMINGHAM, AL 35212</p> <p style="text-align: center;"><i>upon finding that its organization complies in all respects with the requirements of the Federal Aviation Regulations relating to the establishment of an Air Agency, and is empowered to operate an approved REPAIR STATION</i></p> <p style="text-align: center;"><i>with the following ratings:</i></p> <p style="text-align: center;">AIRFRAME LIMITED POWERPLANT (02-01-2018) LIMITED INSTRUMENTS (02-01-2018) LIMITED NONDESTRUCTIVE INSPECTION AND TESTING (02-01-2018) LIMITED RADIO (02-01-2018) LIMITED SPECIALIZED SERVICES (02/01/2018)</p> <p style="text-align: center;"><i>This certificate, unless canceled, suspended, or revoked, shall continue in effect INDEFINITELY</i></p> <p style="text-align: center;"><i>Date issued:</i> MAY 25, 1993</p> <p style="text-align: center;"><i>By direction of the Administrator</i>  WILLIAM HOOGENHOUT MANAGER, AFG-600 BHM FSDO-09</p> <p style="text-align: center;"><small>This Certificate is not transferable, and any major change in the basic facilities, or in the location thereof, shall be immediately reported to the appropriate regional office of the Federal Aviation Administration.</small></p> <p style="text-align: center;"><small>Any alteration of this certificate is punishable by a fine of not exceeding \$7,000, or imprisonment not exceeding 3 years, or both.</small></p> <p style="text-align: center;"><small>FAA Form 8000-4 (1-87) SUPERSEDES FAA FORM 336. Electronic Form (PDF)</small></p>	CAPABILITY LIST		CAPABILITY LIST	
	POWERPLANT TYPE	DATE ACCEPTED	AIRCRAFT TYPE	DATE ACCEPTED
All APUs	02/16/2018	McDonnell Douglas DC-9-80 series	02/16/2018	
General Electric 90 Series	02/16/2018	Airbus A319/A320/A321/A330	02/16/2018	
General Electric CF-6 series	02/16/2018	Boeing 717	02/16/2018	
General Electric CFM 56 Series	02/16/2018	Boeing 737-300/400/500/700/800	02/16/2018	
International Aero Engines AG, V2500 series	02/16/2018	Boeing 757-200/300	02/16/2018	
Pratt & Whitney 2000 series	02/16/2018	Boeing 767-200/300/400	02/16/2018	
Pratt & Whitney 4000 series	02/16/2018	Boeing 777	02/16/2018	
Pratt & Whitney JT8-D series	02/16/2018	EMB-190	02/16/2018	
Rolls Royce BR 715	02/16/2018			
Rolls Royce RB 211 Series	02/16/2018			
Rolls Royce Trent 800	02/16/2018			

# Why Kaiser for Aircraft Disassembly?

Kaiser offers an all-in-one solution for fleet aircraft disassembly services. Significant advantages that Kaiser offers include:

- Kaiser is AFRA certified using best practices.
- Disassembly services are provided inside one of our ten 116,000 square foot hangars.
- Cradle to grave, real time, parts tracking processes that includes each part's number, serial number, and a corresponding picture with the part's location.
- Real time parts progress tracking that customers can access 24 hours a day.
- Ample warehouse storage space and services for disassembled parts.
- Onsite hull demolition and removal.
- A highly trained workforce focused on customer service.



# Ideal Facility for an Engine Disassembly Center of Excellence

[Link to video](#)



[Link to video](#)



Kaiser Aircraft has a decades-long history of first-class service across MRO maintenance, disassembly, and parts solutions. We have the capacity to support large OEMs as a low-cost provider for maintenance services.

Kaiser Aircraft aims to serve large aviation companies with a variable cost model that can help mitigate the impacts of uncertainties associated with today's volatile aviation market.



# Main Hangar Building

## Facility Overview

### Hangar Bays

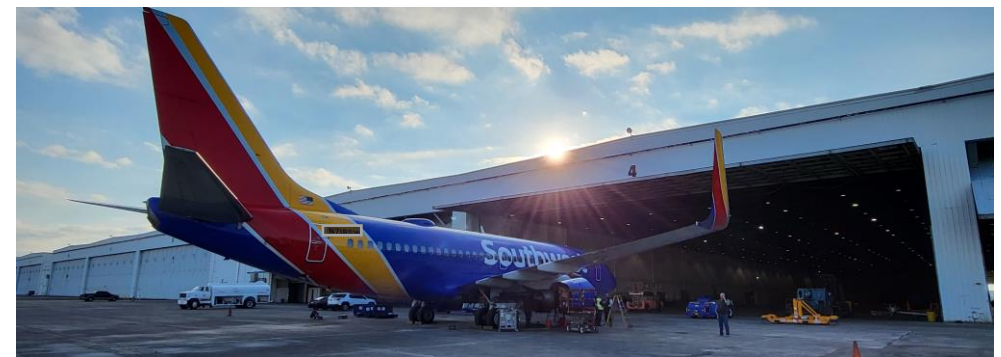
- 10 bays: 160' x 725' x 40'
- Flow-thru design for up to forty-two (42) 737-800 aircraft
- Bays are equipped with grounding points, fire suppression, floor power pits for easy access, etc.

### Service Bays

- Service Bay 1: 72,500 square feet of potential office space and back shops with *closest proximity to flight line, blast fence, and bridge to runways*
- Service Bay 2: 116,000 square feet of potential office space and back shops, with *closest proximity to paint hangar and wash rack*
- Service Bay 3: 72,500 square feet of potential office space and back shops, with *closest proximity to warehouses*

## Potential Use Cases

- Modification and check work
- Aircraft disassembly and parts processing
- Line services
- Overnight checks
- Engine changes
- Ancillary maintenance
- Wireless equipment upgrades
- AOG support



# Paint Hangar and Wash Rack

## Facility Overview

### Paint Hangar

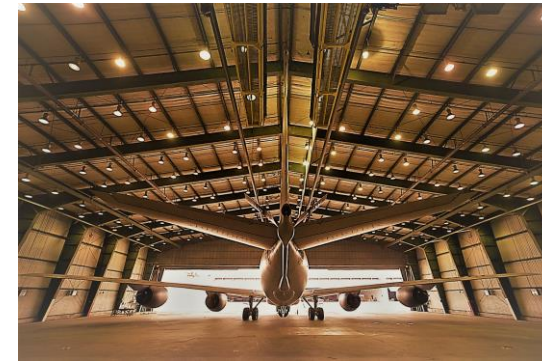
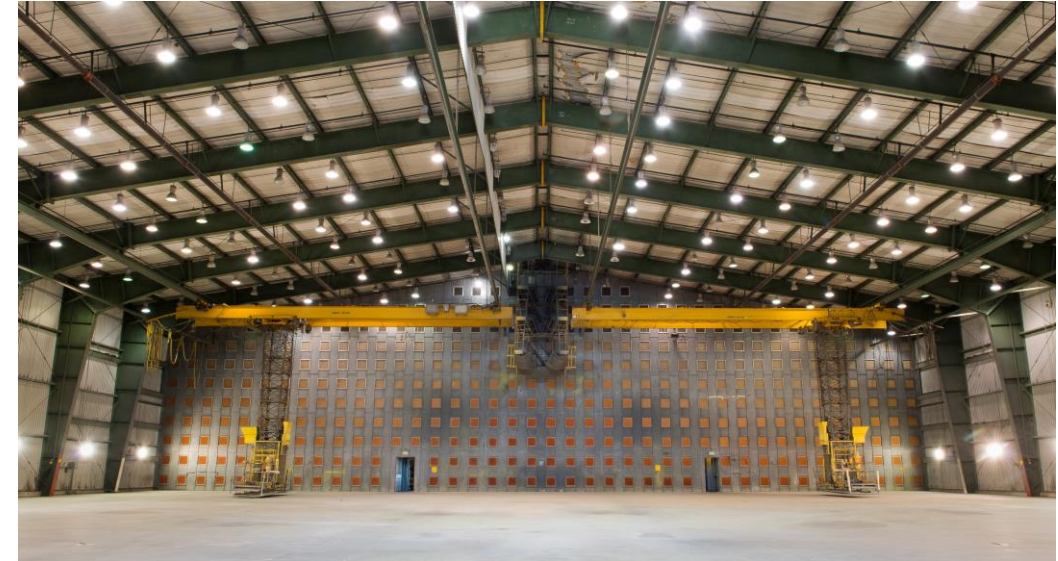
- 184' x 203' x 40'
- 37,350 square feet
- Two four-ton bridge cranes with telescopic platforms for efficient paint operations
- Wind tunnels for optimal air exchange
- Vertical and horizontal lighting with explosion-proof fixtures

### Wash Rack

- 160' x 375' wash and strip bay
- Located across the ramp from the Paint Hangar, with immediate access to Service Bay 2 back shops

## Potential Use Cases

- Aircraft de-paint and paint
  - Livery updates
  - Repairs
- Component de-paint and paint
  - Cowling
  - Doors
  - Repairs



# Warehouses & Auxiliary Buildings

## Facility Overview

### Warehouse 214

- 120,000 square feet
- Includes loading docks and 4,500 square feet of shipping/receiving space with new LED fixtures
- Includes office space and restrooms
- Substantial racking, shelving, and warehouse fixtures available for immediate use

### Warehouse 217

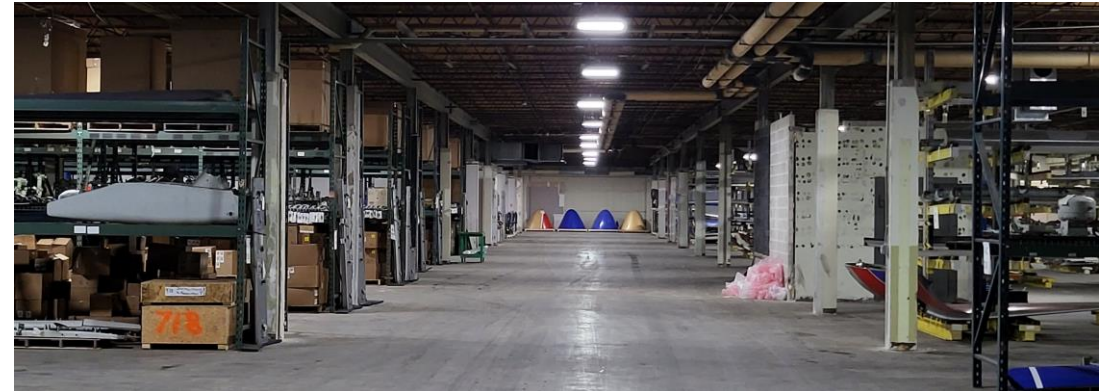
- 112,500 square feet
- Drive-through bays for efficient loading and unloading
  - Overhead crane
- Offices and restrooms

### Former Corp Office (Bldg. 201)

- 60,000 square feet of newly refurbished warehouse space
- Outfitted with cantilever racking and new LED motion lighting
- 5-acre parking lot

## Potential Use Cases

- Engine disassembly and refurbishment
- Parts identification, cleaning and repair
- Inventory management
  - Large tooling
  - Landing gear
  - Interiors
  - Equipment
  - Parts and components



# Additional Facilities

## Facility Overview

### Flight Line Hangar (see right)

- 16,000 square foot building recently renovated to include LED fixtures

### Apron

- Ramp space for 150-200 aircraft – with tie downs and grounding points
- Direct access to 12,007' main runway

### Fuel Farm

- Defueling capabilities, with 240,000+ gallons of fuel storage

### Battery Shop

### Chemical Warehouse

## Potential Use Cases

- Interior components manufacturing, refurbishment, and repair
- Receive, inspect, catalog, sell, and process surplus inventory

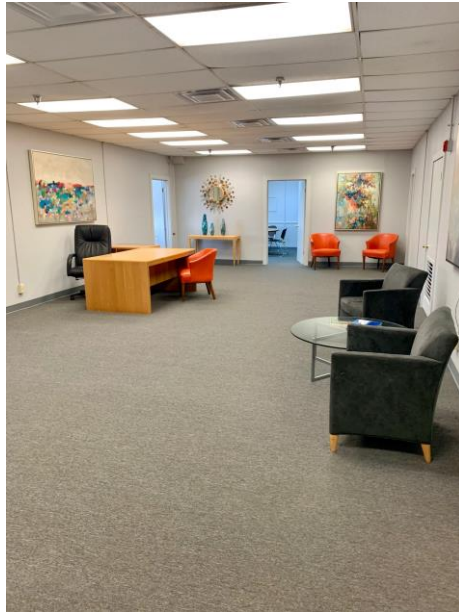


# Office Space

(Selected Renovations Shown Below)



**Service Bay 1**  
1<sup>st</sup> Floor, Center Aisle



**Service Bay 2**  
2<sup>nd</sup> Floor, West



**Service Bay 3**  
1<sup>st</sup> Floor, Center Aisle

# Kaiser Aircraft's Executive Leadership Team

## Dale Mullinax, President & CEO

- US Air Force (4 Years)
  - Aircraft Mechanic
  - Crew Chief
  - Vietnam Veteran
- Alabama Aviation Technical College, Associate's Degree, Airframe & Power Plant License
- Clayton State College, Aviation Management
- Northwest Airlines, 1971-1994
  - Manager of Production, Manager of Quality Control / Non-Destructive Testing
- Timco, 1994-2003
  - Vice President of Maintenance, Senior Vice President of Operations
- Pemco, 2003-2005
  - Vice President of Production
- Leading Edge Aviation Services, 2006-2009
  - Accountable / General Manager
- Commercial Jet Aviation, 2009-2010
  - Vice President of Operations - Accountable Manager
- AerSale Inc., 2010-2012
  - General Manager / Accountable Manager
- Kaiser Aircraft, 2012-Present
  - Director of Maintenance - MRO Operations
  - President, Chief Operating Officer
  - Chief Executive Officer

Dale is a dedicated and proven leader with 42 years of managerial experience in the aviation industry across military, commercial, and repair station assignments. Dale has excellent problem-solving, interpersonal, and communication skills that have been proven through a wide range of assignments and contributed to high levels of customer satisfaction.

Dale possesses hands-on knowledge regarding strategic business planning, multi-functional organizational structuring, and budget management. Dale possesses an excellent network of industry relationships.

# Kaiser Aircraft's Executive Leadership Team

## Robert Cannon, Executive Vice President

- University of Alabama – BS in Accounting
- CPAs maintained in Maryland and Alabama
- 15 years of experience within Southern Company with positions including:
  - Enterprise Project and Implementation Manager
  - Fleet Project Controls Manager
  - Engineering and Performance Improvement Supervisor
  - Project Accountant to Plants Farley and Hatch and plant liaison to Alabama Power and Georgia Power
- 5 years of public accounting experience
  - Naden/Lean LLC in Baltimore, MD
  - Barfield, Murphy, Shank and Smith LLC in Birmingham, AL
- Kaiser Aircraft, 2021-Present
  - Chief Administrative Officer
  - Executive Vice President

Rob is a determined and proven leader with ten years of managerial experience in the nuclear industry and five years of experience in public accounting. He is an expert in the financial and budgetary fields with an additional expertise in project controls.

Rob has a broad range of communication, technical, and interpersonal skills that has been tested throughout his career and has contributed to high level of financial performance customer satisfaction. Rob possesses first-hand knowledge of strategic business planning, project controls, multi-functional organizational structuring, and strong financial management.

# Kaiser Aircraft's Executive Leadership Team

## Doris Sewell, Director

- Samford University BA, MBA
- Cumberland School of Law, JD
- Pemco Aviation Group - General Counsel, 2000-2007
- Alabama Aircraft - Senior Vice President and General Counsel, 2007-2011
- Kaiser Aircraft – General Counsel, 2011-2022, and CEO, 2016-2022
- Kaiser Group Holdings – Chief Executive Officer, 2022-present

## Harold “Skip” Bowling, Director

- Georgia Tech, BS AE
  - Engineering Alumni Hall of Fame
  - Georgia Tech Academy of Distinguished Engineering Alumni
  - Georgia Tech Engineering Hall of Fame
- Georgia State University, MBA
- US Army – Artillery Officer, Helicopter Pilot (4 Years)
  - Awarded US Army Commendation Medal for Leadership in Several Division Special Operations
- US National Guard – Helicopter Pilot (35 Years)
- Former Executive, Lockheed Martin (43 Years Tenure)
  - Incl. President of Lockheed Martin Aeronautics International (Military / Commercial Aircraft Maintenance / Modification Business)
- Member, Foundation Board for St. Joseph's Hospital
- Member, Advisory Board for ARCS

## Michael Tennenbaum, Chairman

- Georgia Tech, BS IE
  - Lifetime Trustee
  - Engineering Alumni Hall of Fame
  - Honorary Doctorate
  - Trustee Emeritus, Georgia Tech Foundation
- US Army Signal Corps Officer
- Harvard Business School
  - Dean's Advisory Board
  - Visiting Committee
- Founding Chair, Boys and Girls Clubs of Puerto Rico Legacy Council
- Life Member, Boys and Girls Clubs of America Board of Governors
  - Formerly Vice Chairman of Board and Chairman of Investments Committee
- Recipient, Department of Defense Distinguished Civilian Service Award
- Former Member, Smithsonian Institution National Board and Board of Regents' Investment Committee
- Former Member, Secretary of the Navy Advisory Panel
- Former Commissioner, Intercity High-Speed Rail Commission for CA
- Former Chairman, California High-Speed Rail Authority
- Former Chairman, Special Financial Advisory Committee to the Mayor of Los Angeles
- Former Chairman, Joffrey Ballet
- Former Director, Los Angeles County Music Center